



Anchor Resources Limited

ABN: 49 122 751 419

ASX Code: AHR

Website: anchorresources.com

7th October 2014

NEW SOUTH WALES MINERALS EXPLORERS PRESENTATION

Attached is the presentation to be given today by the Managing Director of Anchor Resources Limited at the NSW State Government's, NSW Trade and Investment (NSWT&I) presentation.

Guy Robertson

Company Secretary

Anchor Resources Limited

Directors

Mr. Ian Price	Managing Director
Mr. Jianguang Wang	Chairman
Mr. Steven Yu	Director
Mr. Vaughan Webber	Director
Mr. R N (Sam) Lees	Director

Address

6 Chepstow Drive CASTLE HILL NSW 2154

Investor & Media Enquiries

Ian Howarth | Ph.: +61 407 822 319

NEW DISCOVERIES IN THE NEW ENGLAND FOLD BELT MOLYBDENUM-TUNGSTEN



NSW Mineral Explorers Presentation

7 October 2014

Sydney NSW

ASX CODE: AHR

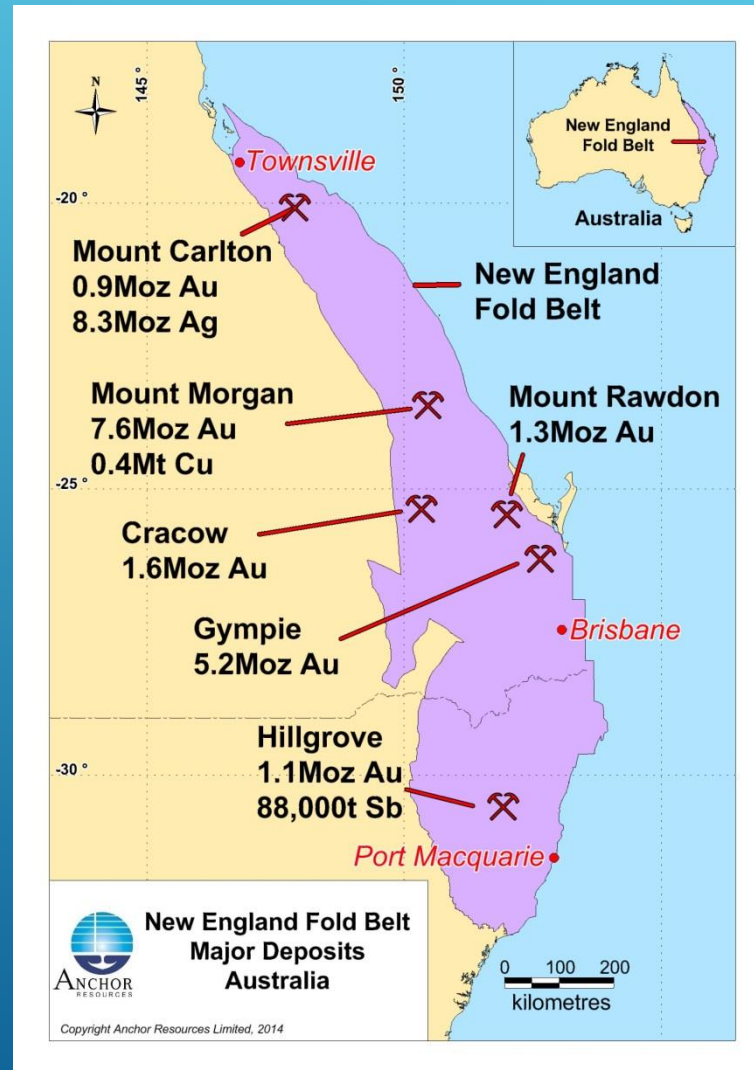
DISCLAIMER

For personal use only

The material in the presentation ("material") is not and does not constitute an offer, invitation or recommendation to subscribe for, or purchase any security in Anchor Resources Limited ("AHR") nor does it form the basis of any contract or commitment. AHR makes no representation or warranty, express or implied, as to the accuracy, reliability or completeness of this material. AHR, its directors, employees agents and consultants shall have no liability, including liability to any person by reason of negligence or negligent misstatement, for any statements, opinions, information or matters, express or implied, arising out of, contained in or derived from, or for any omissions from this material except liability under statute that cannot be excluded. Statements contained in this material, particularly those regarding possible or assumed future performance, costs, dividends, production levels or rates, prices, resources, reserves or potential growth of AHR, industry growth or other trend projections are, or may be, forward looking statements. Such statements relate to future events and expectations and, as such, involve known and unknown risks and uncertainties. Actual results and developments may differ materially from those expressed or implied by these forward looking statements depending on a variety of factors.

The information relating to the Exploration Results and geological interpretation for the Blinks project and the Birdwood is based on information compiled by Mr Graeme Rabone, MAppSc, FAIG. Mr Rabone is Exploration Manager for Anchor Resources Limited and provides consulting services to Anchor Resources Limited through Graeme Rabone & Associates Pty Ltd. Mr Rabone has sufficient experience relevant to the assessment and of these styles of mineralisation to qualify as a Competent Person as defined by the "Australasian Code for Reporting of Exploration Results, Mineral Resources and Ore Reserves – The JORC Code (2012)". Mr Rabone consents to the inclusion of the information in the report in the form and context in which it appears.

NEW ENGLAND FOLD BELT



THREE LARGE PORPHYRY PROSPECTS DISCOVERED IN 2013/14

BLICKS PROJECT

- Tuting prospect - tungsten & molybdenum
- Liberty prospect - molybdenum & copper

BIRDWOOD PROJECT

- North Birdwood prospect – copper & molybdenum

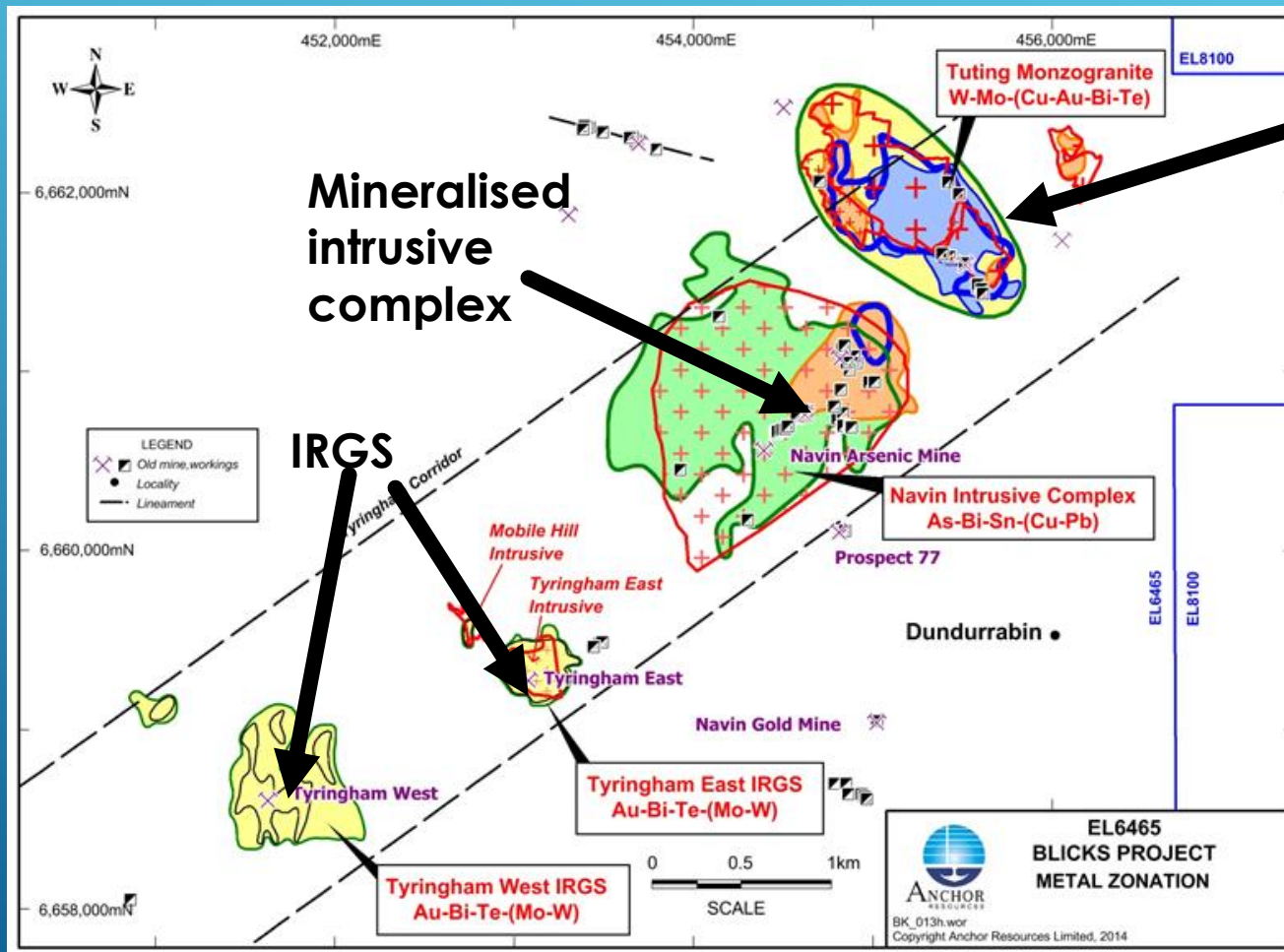
ANCHOR'S EXPLORATION STRATEGY

- Build a quality team including world class advisors
- Use state of the art geological models
- Apply good resources to exploration
- Put boots on the ground
- Persevere

BLICKS MOLYBDENUM-TUNGSTEN-COPPER- GOLD PROJECT



MULTIPLE MINERAL SYSTEMS IN THE TYRINGHAM CORRIDOR

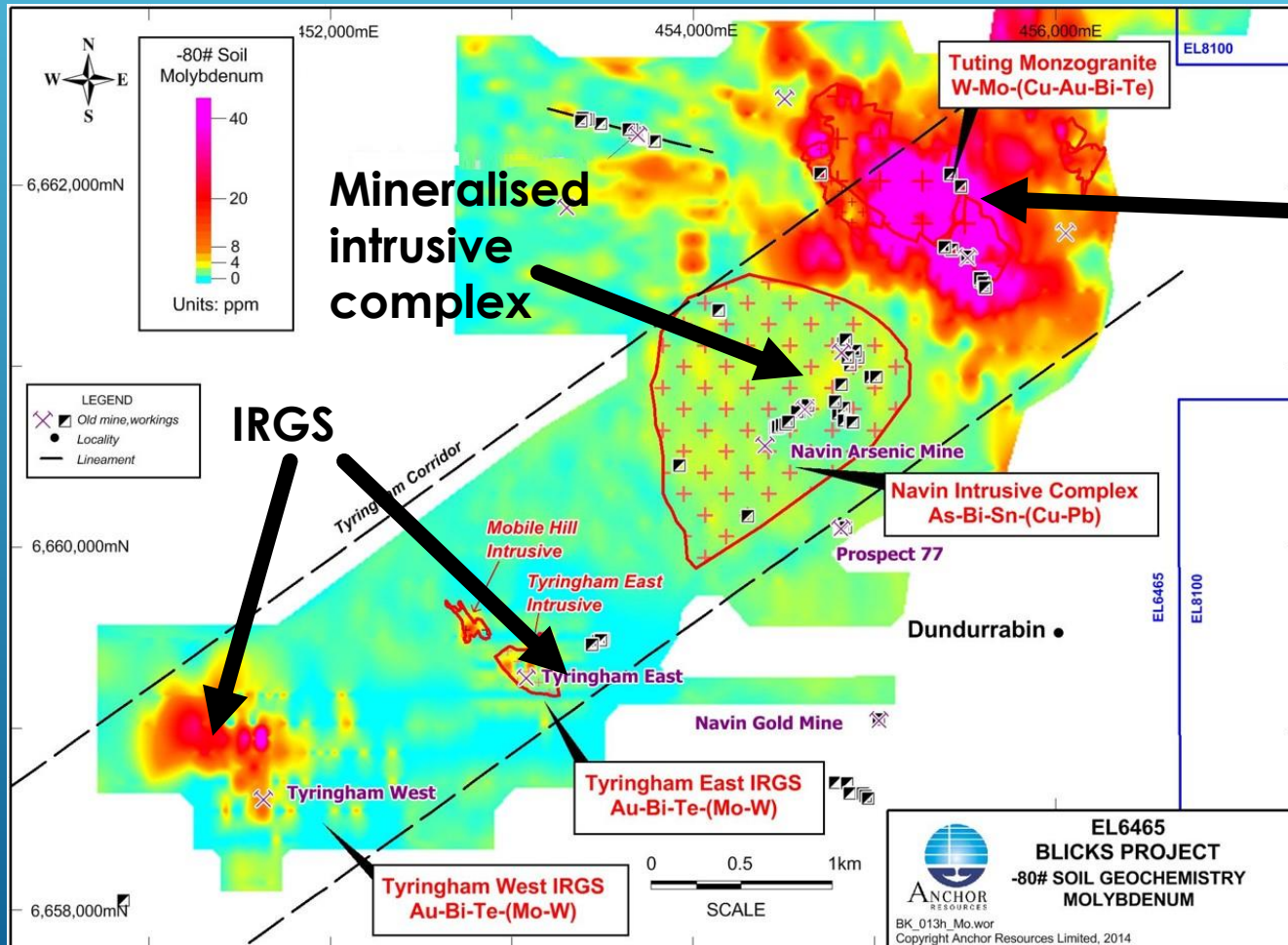


Porphyry system

Mineralised intrusive complex

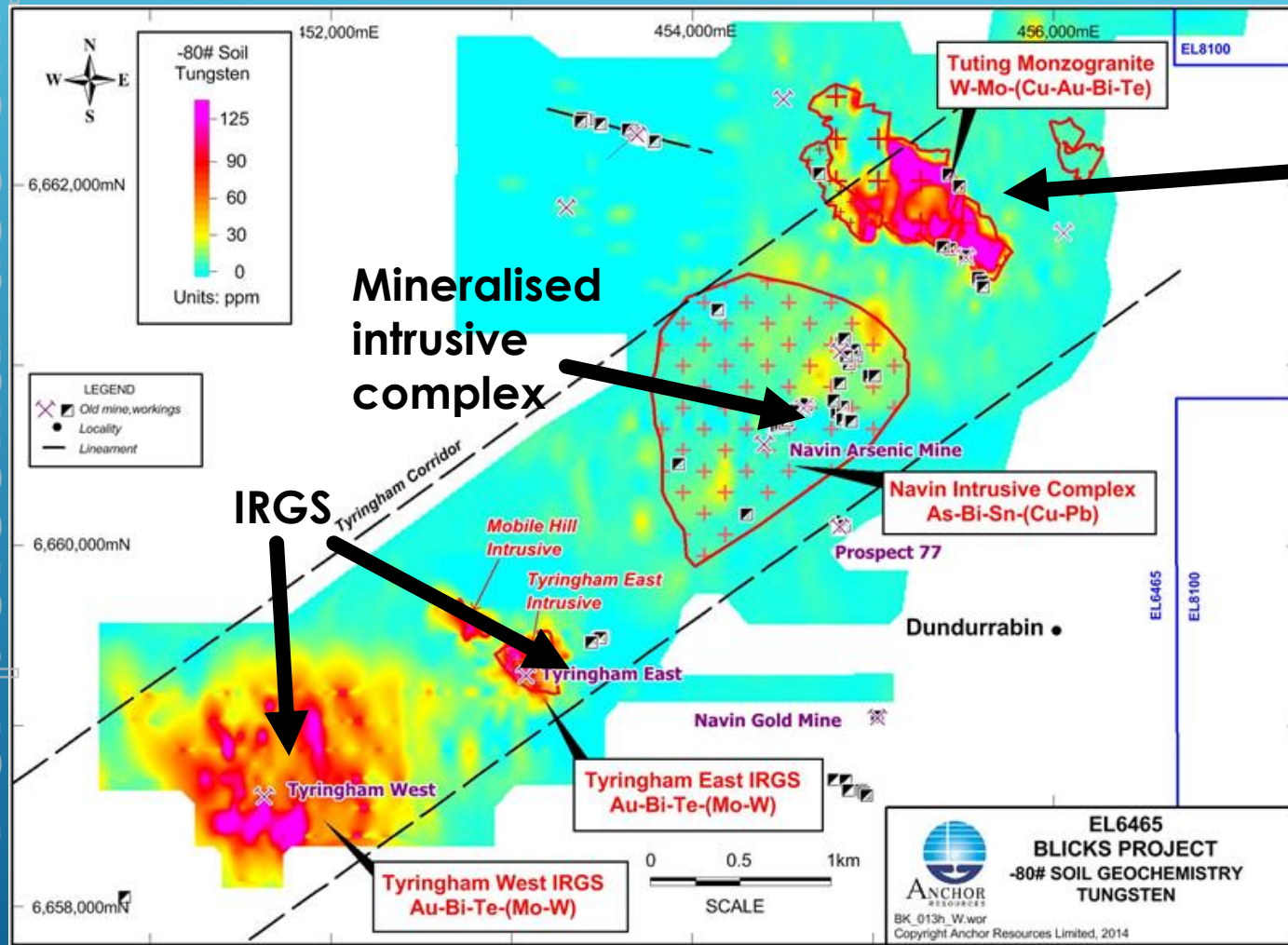
IRGS

TUTING PROSPECT MOLYBDENUM



Porphyry system

TUTING TUNGSTEN



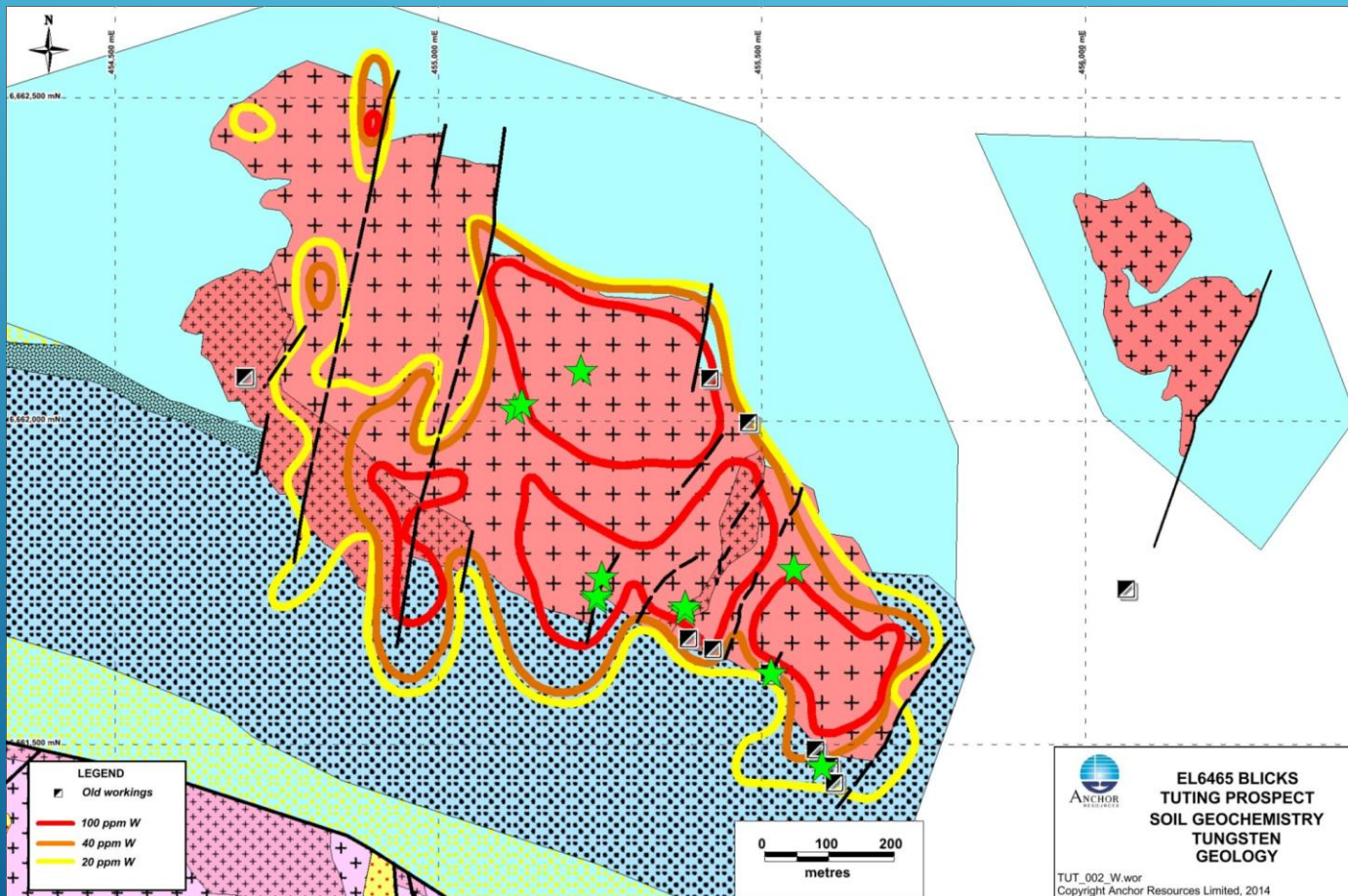
Porphyry system

Mineralised intrusive complex

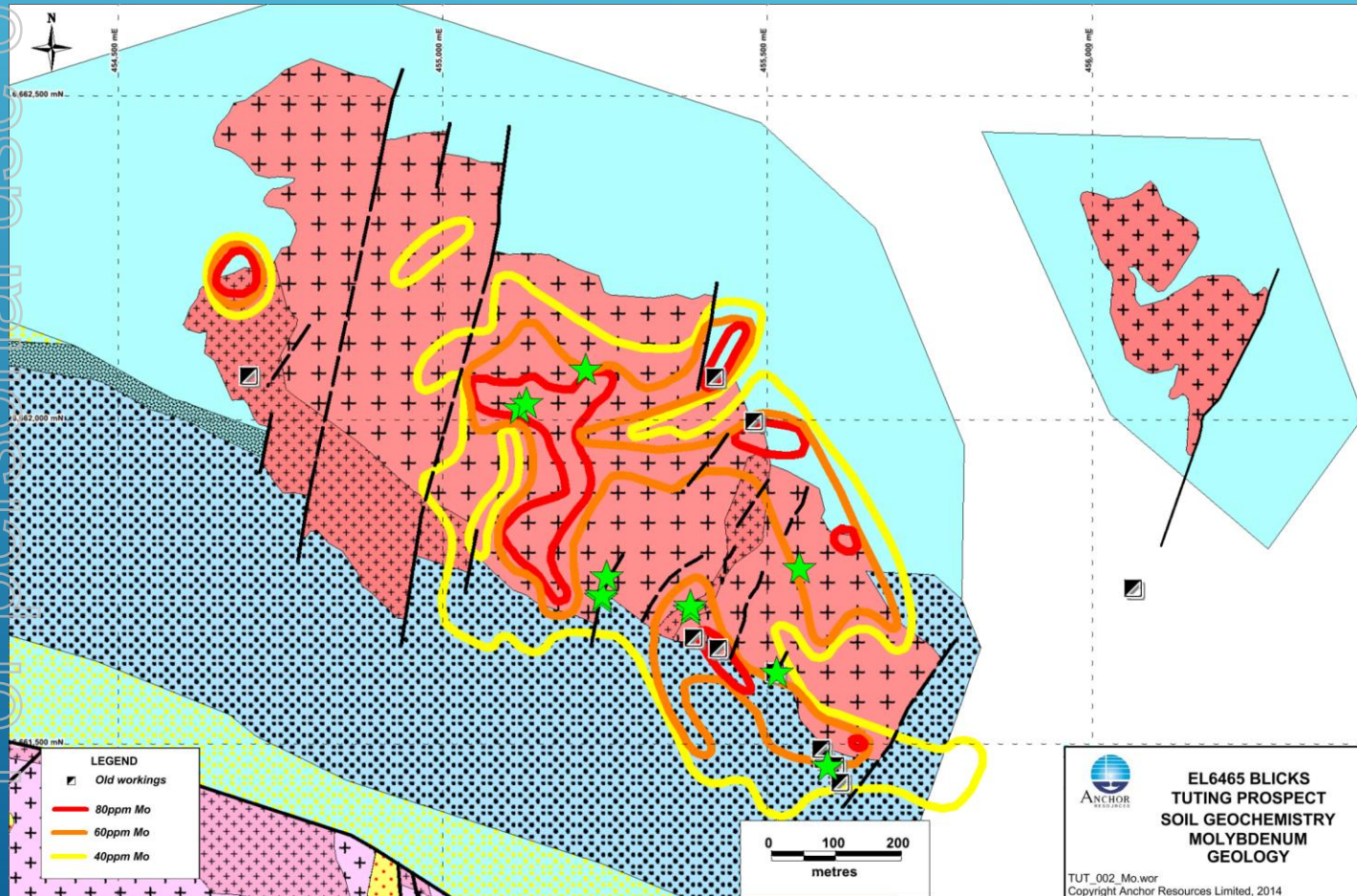
IRGS

TUTING TUNGSTEN GEOCHEMISTRY AND GEOLOGY

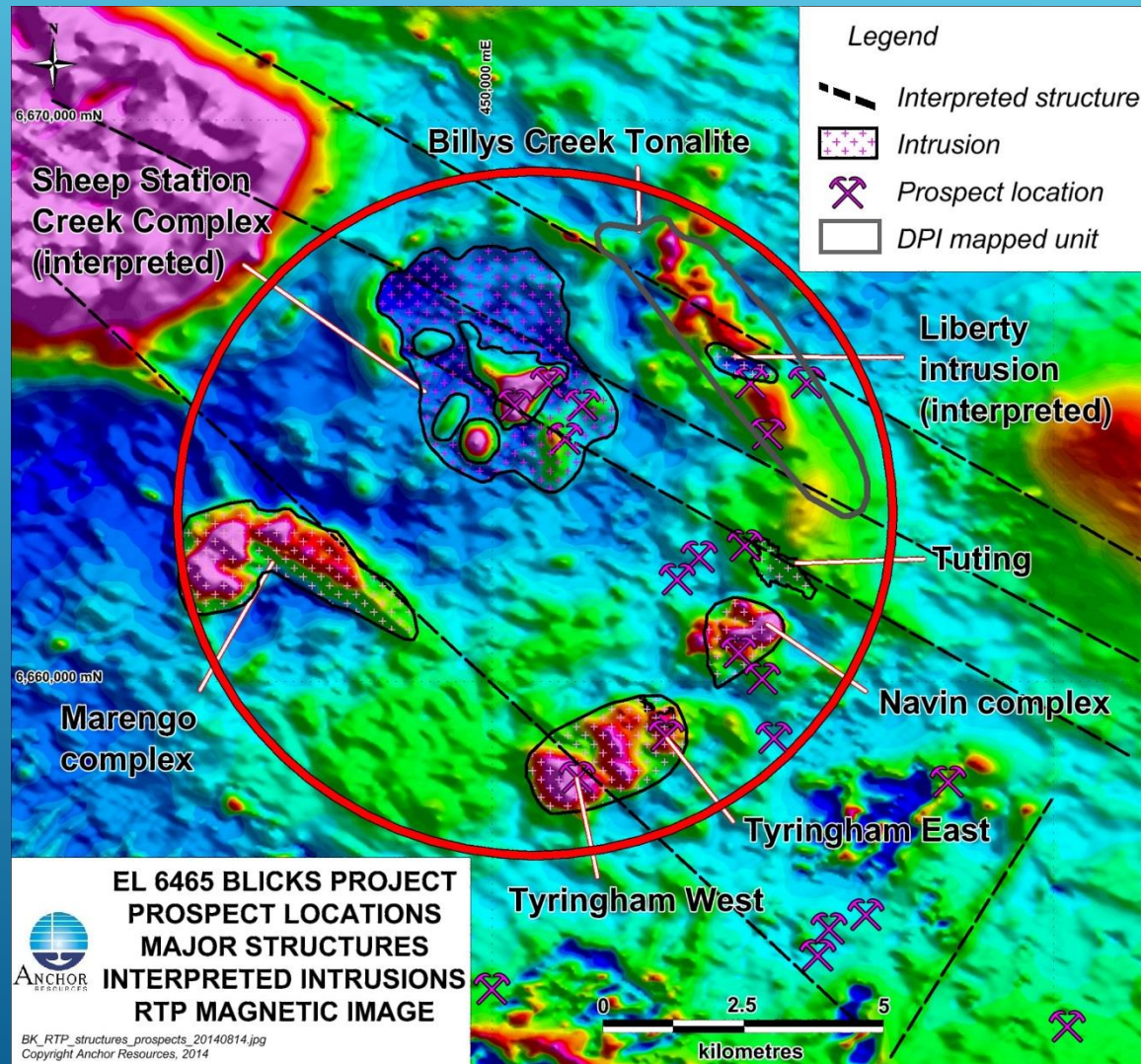
For personal use only



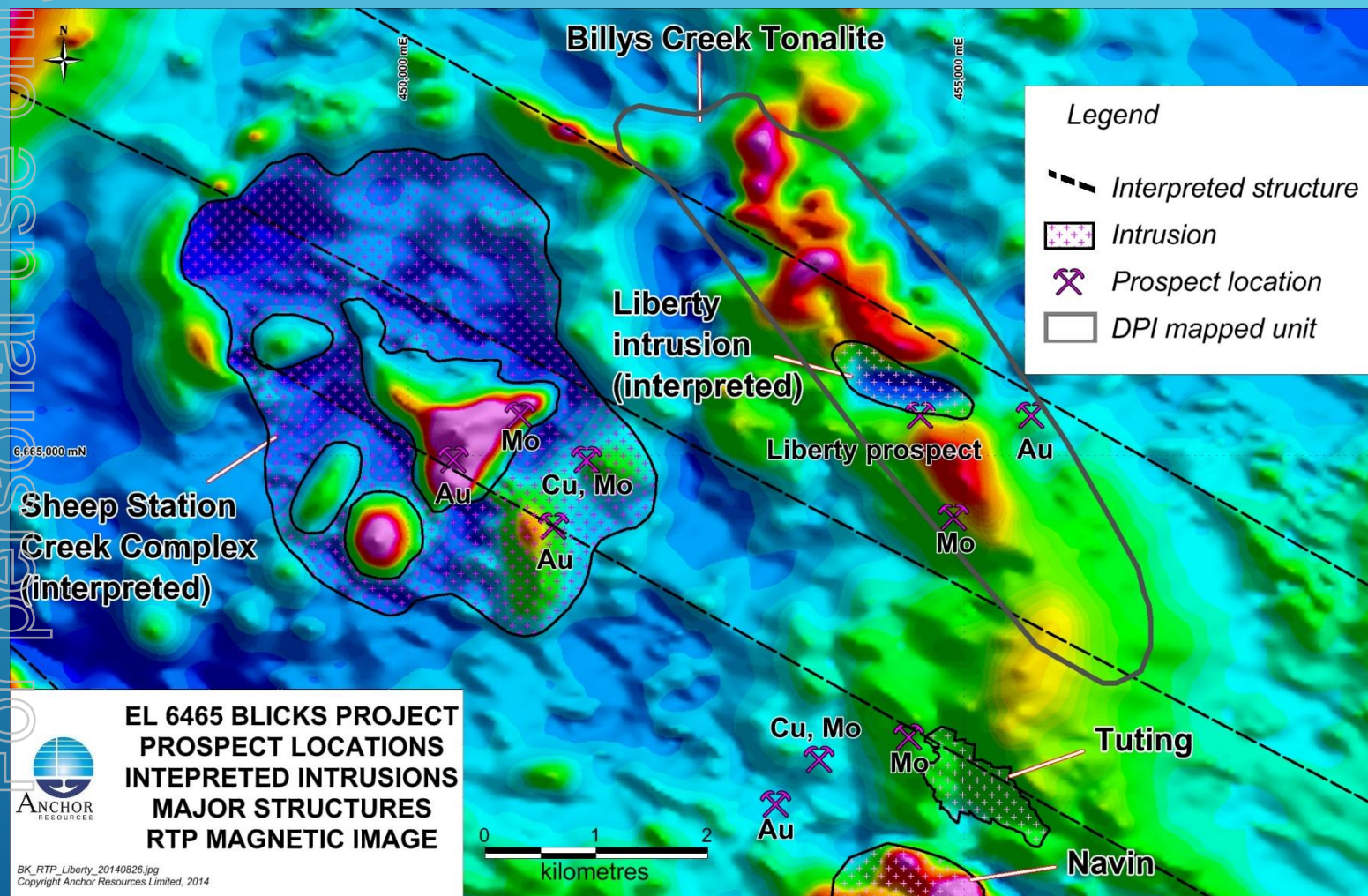
TUTING MOLYBDENUM GEOCHEMISTRY AND GEOLOGY



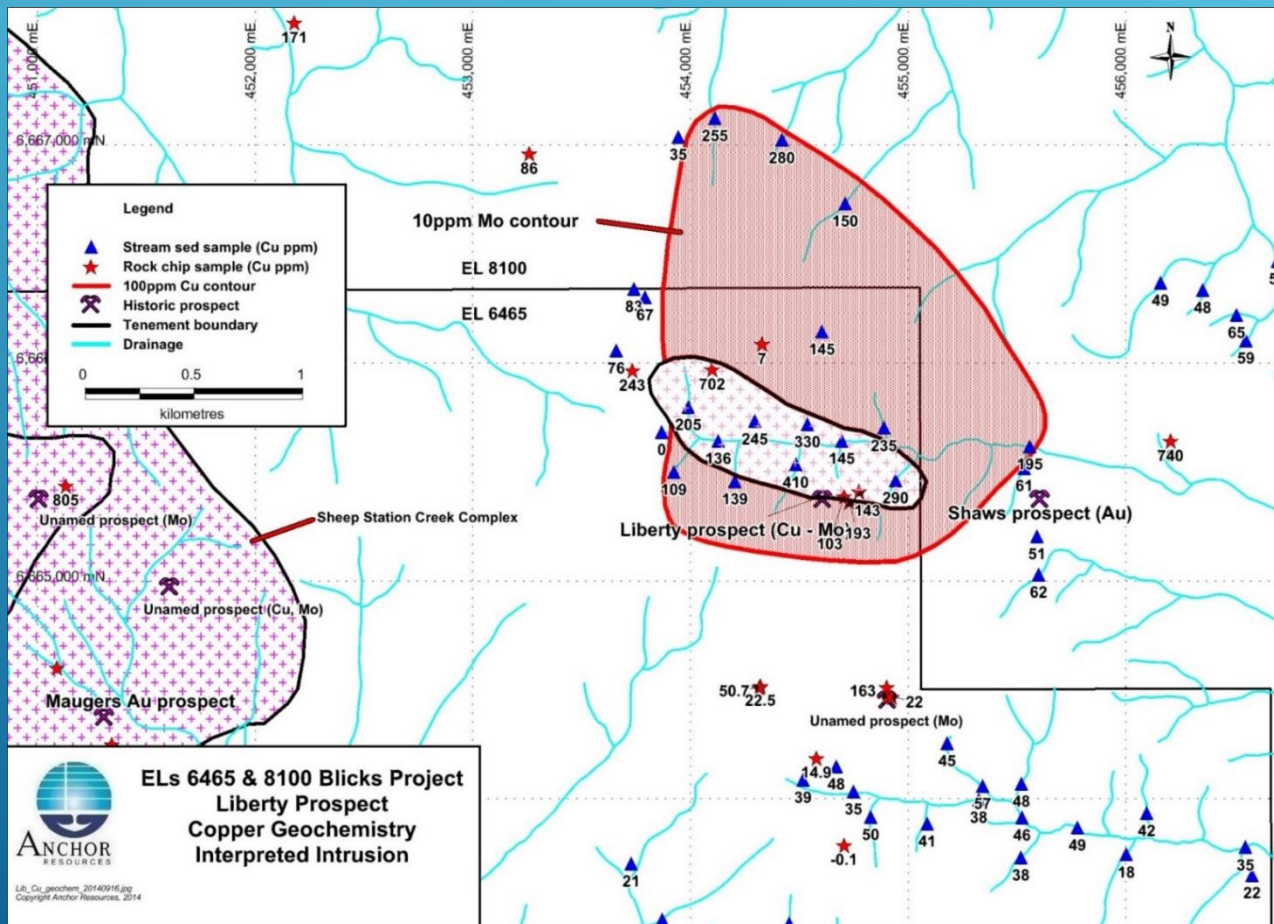
REDUCED TO POLE REGIONAL MAGNETICS



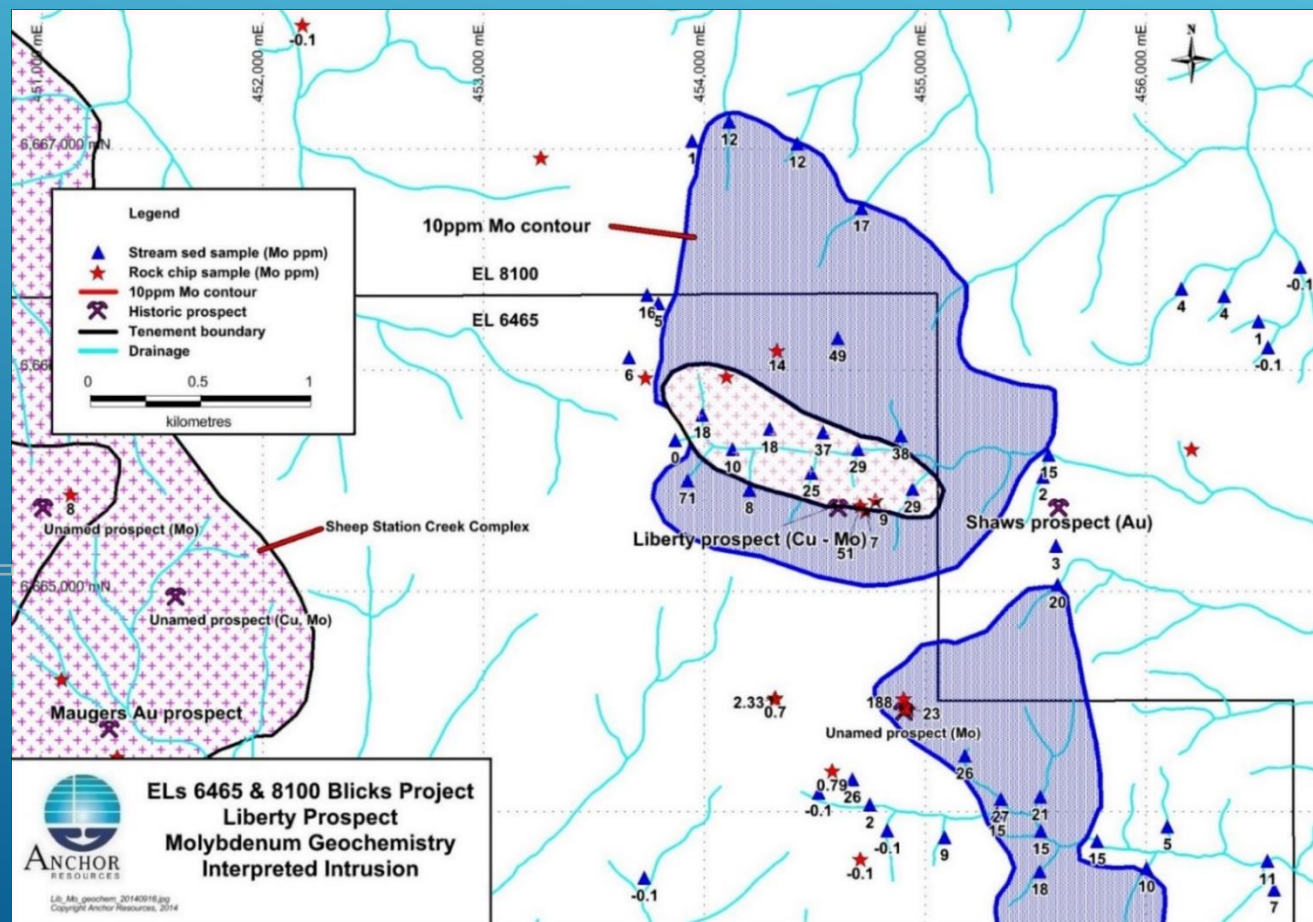
LIBERTY RTP MAGNETICS



LIBERTY STREAM SEDIMENT COPPER GEOCHEMISTRY AND MAGNETIC LOW



LIBERTY STREAM SEDIMENT MOLYBDENUM GEOCHEMISTRY WITH MAGNETIC LOW

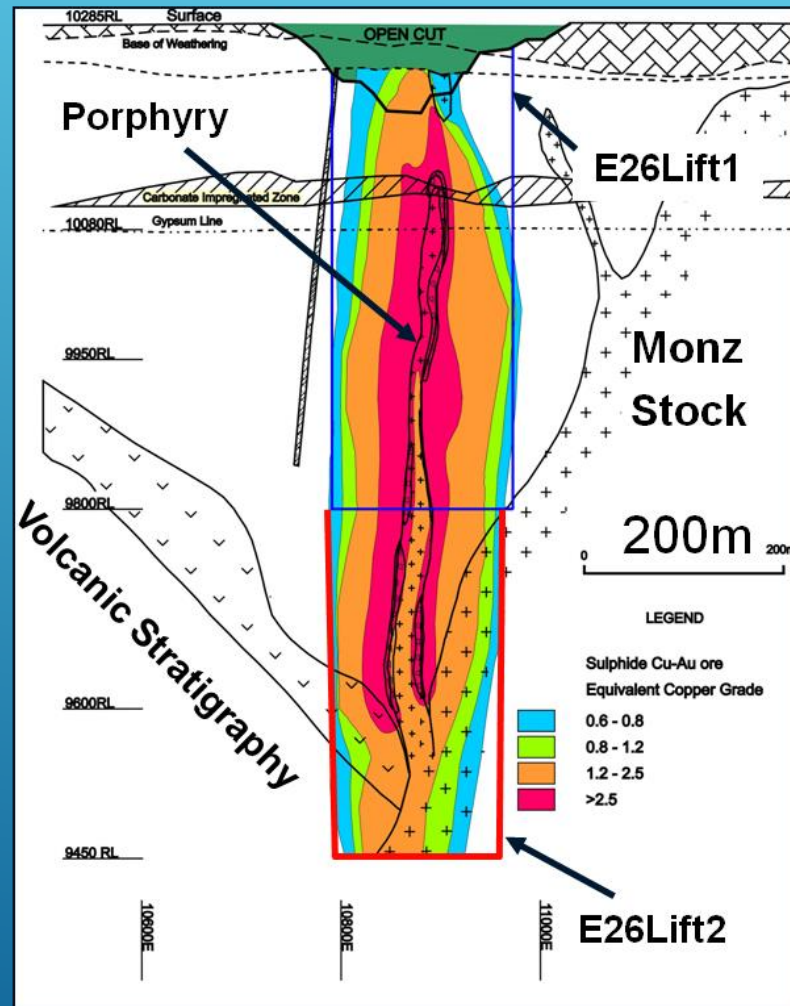


BIRDWOOD COPPER-MOLYBDENUM



NORTHPARKES COPPER - GOLD MODEL

For personal use only



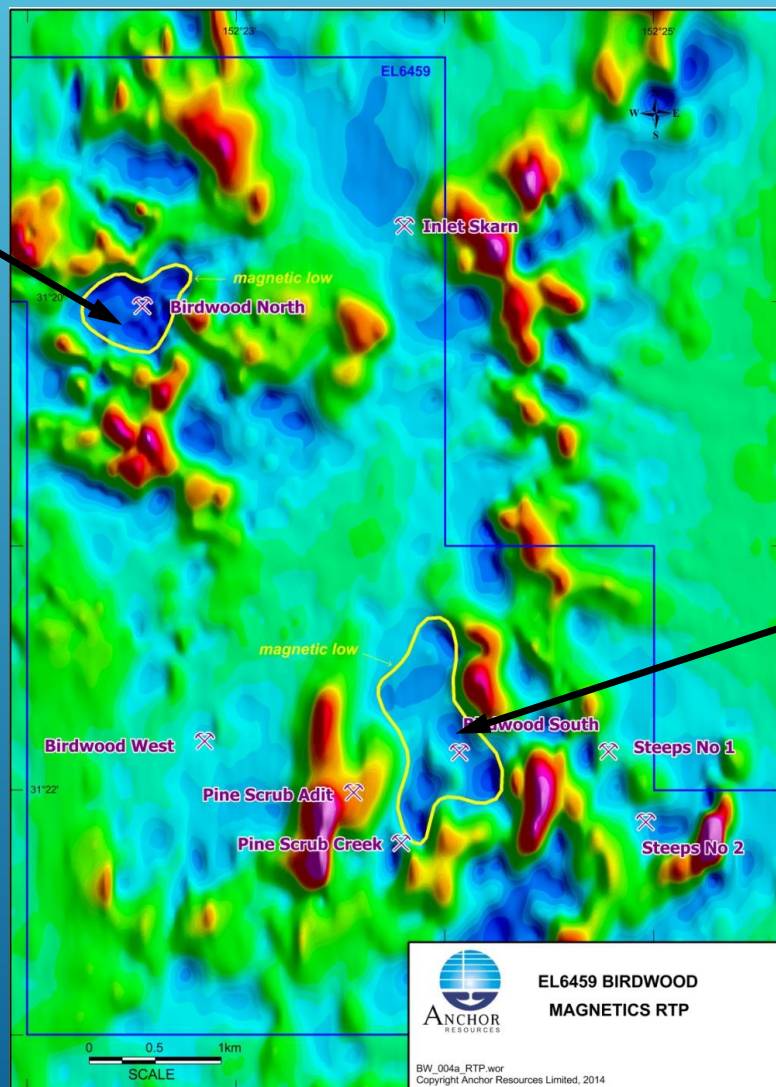
E26 deposit 34.2 Mt @ 1.5% Cu 0.51g/t Au at start up

Lye, 2006

BIRDWOOD MAGNETICS RTP

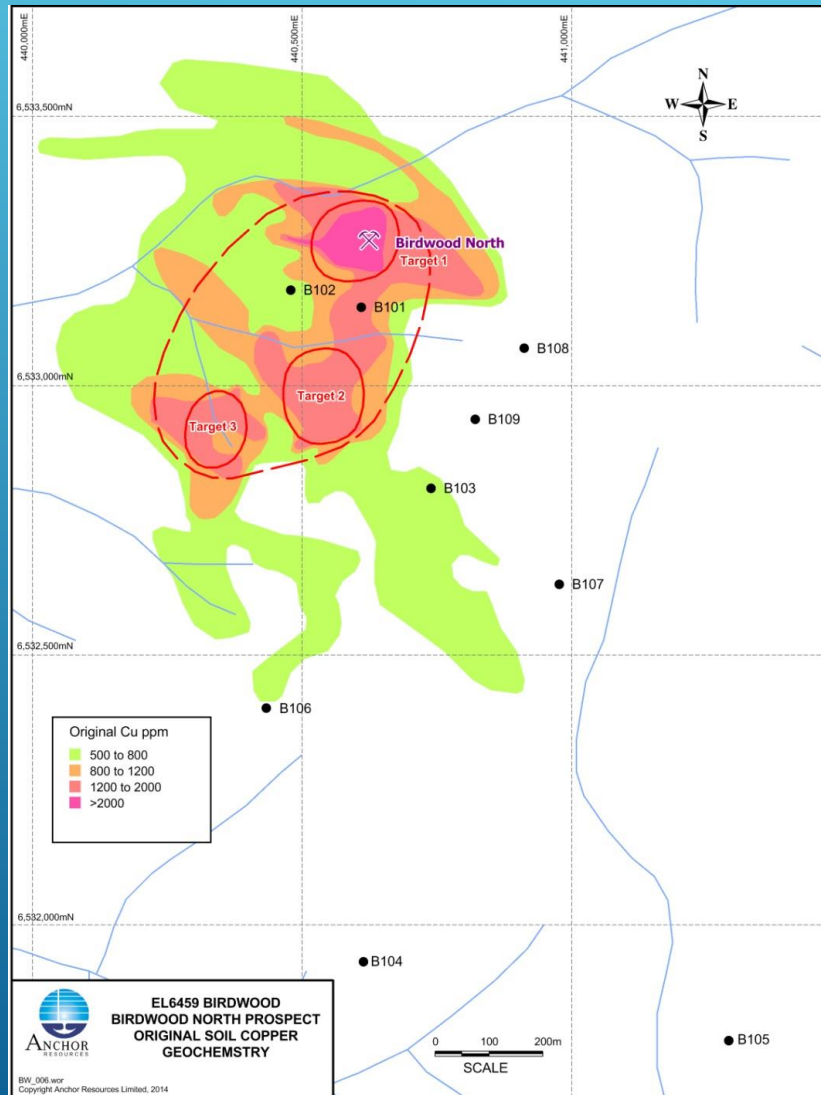
For personal use only

Birdwood North



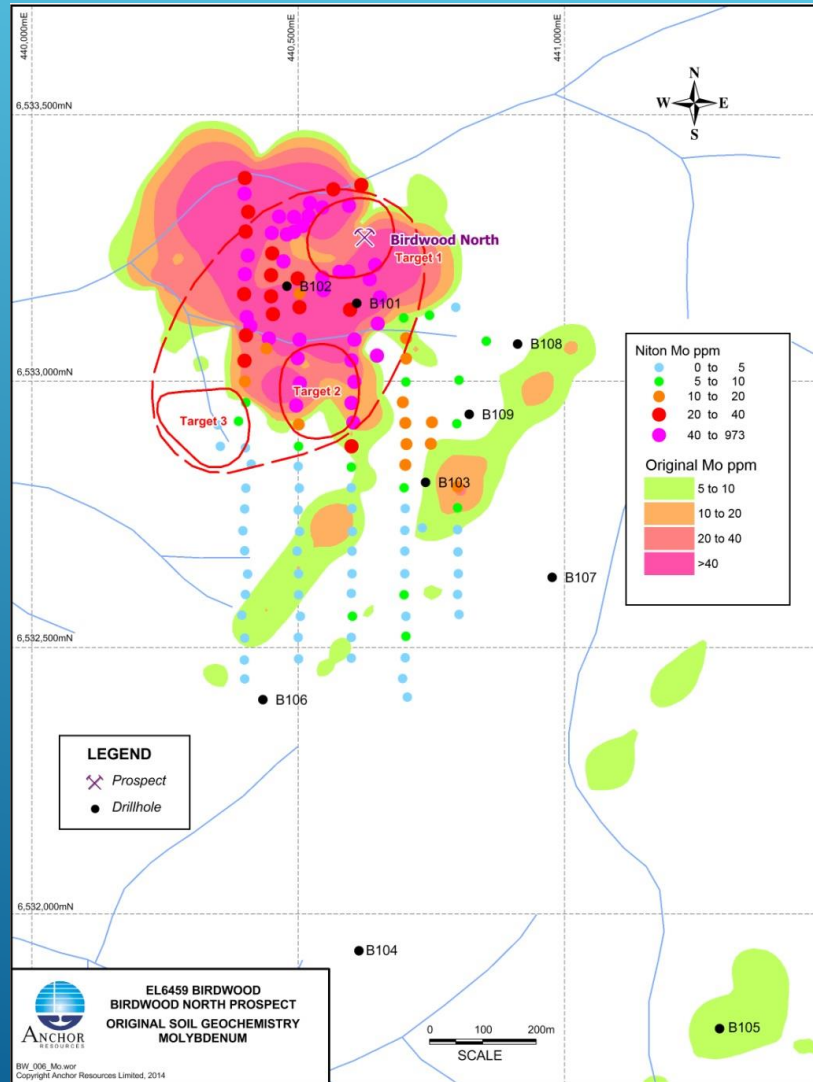
Birdwood South

BIRDWOOD NORTH SOIL COPPER

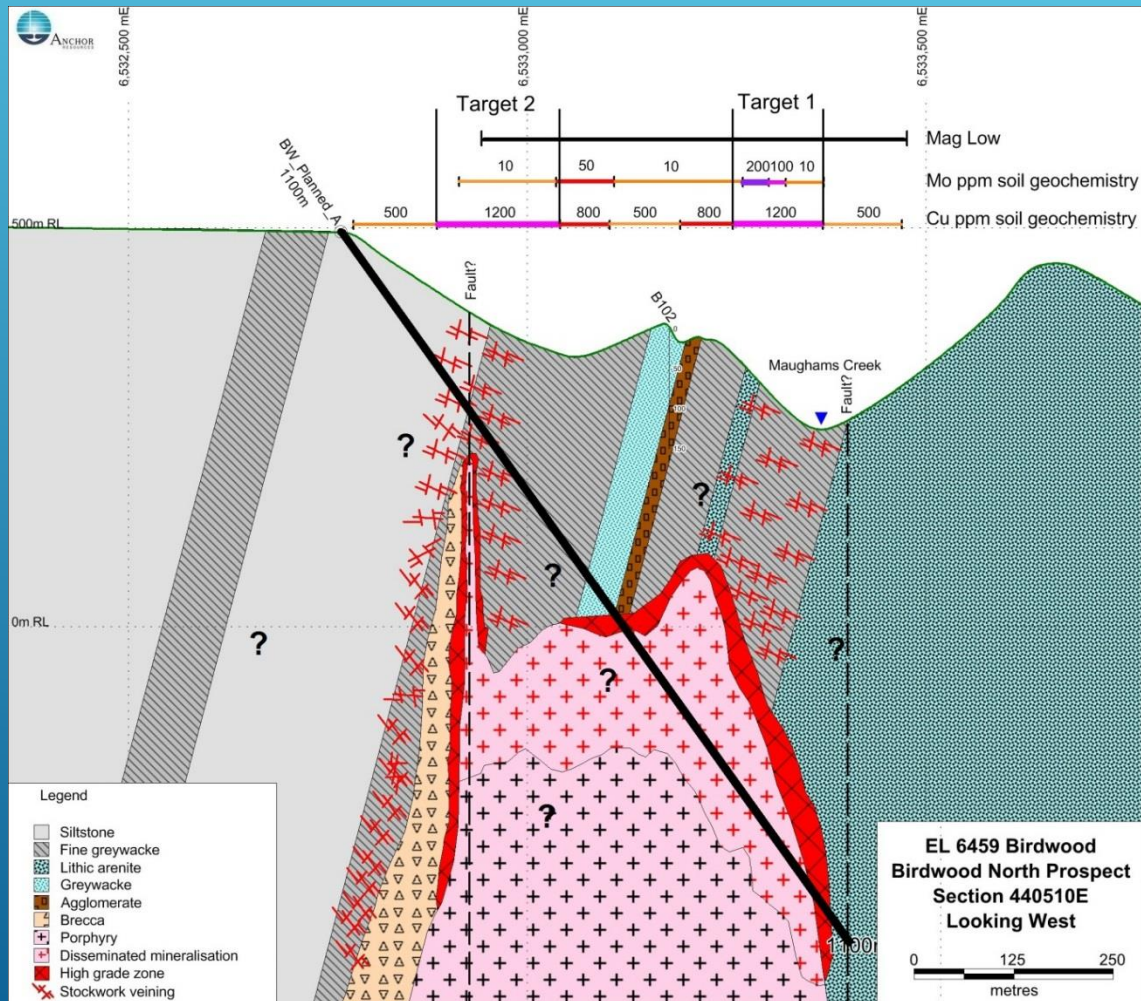


BIRDWOOD NORTH SOIL MOLYBDENUM

For personal use only



BIRDWOOD NORTH PROPOSED DIAMOND DRILL HOLE





ASX Code: AHR