



# The New Frontier: *Intrusion-related Gold Systems in Australia*

**ANCHOR RESOURCES LIMITED**

MELBOURNE MINING CLUB  
CUTTING EDGE SERIES, MAY 2014

# Disclaimer

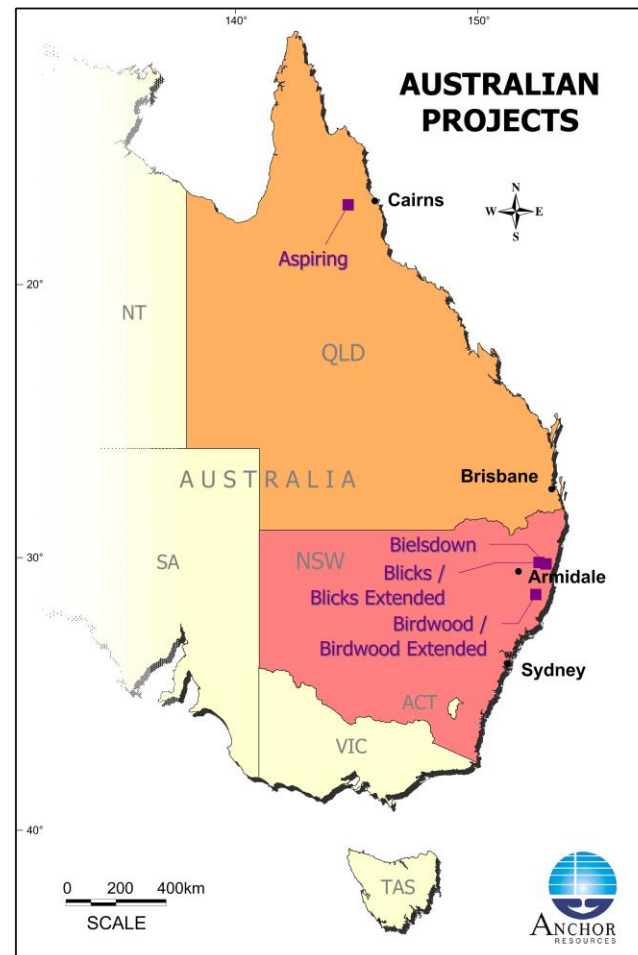
The material in the presentation (“material”) is not and does not constitute an offer, invitation or recommendation to subscribe for, or purchase any security in Anchor Resources Limited (“AHR”) nor does it form the basis of any contract or commitment. AHR makes no representation or warranty, express or implied, as to the accuracy, reliability or completeness of this material. AHR, its directors, employees agents and consultants shall have no liability, including liability to any person by reason of negligence or negligent misstatement, for any statements, opinions, information or matters, express or implied, arising out of, contained in or derived from, or for any omissions from this material except liability under statute that cannot be excluded. Statements contained in this material, particularly those regarding possible or assumed future performance, costs, dividends, production levels or rates, prices, resources, reserves or potential growth of AHR, industry growth or other trend projections are, or may be, forward looking statements. Such statements relate to future events and expectations and, as such, involve known and unknown risks and uncertainties. Actual results and developments may differ materially from those expressed or implied by these forward looking statements depending on a variety of factors.

The information relating to the Exploration Results and geological interpretation for the Bicks project, Bielsdown project, Birdwood project and Aspiring project is based on information compiled by Mr Graeme Rabone, MAppSc, FAIG. Mr Rabone is Exploration Manager for Anchor Resources Limited and provides consulting services to Anchor Resources Limited through Graeme Rabone & Associates Pty Ltd. Mr Rabone has sufficient experience relevant to the assessment and of these styles of mineralisation to qualify as a Competent Person as defined by the “Australasian Code for Reporting of Exploration Results, Mineral Resources and Ore Reserves – The JORC Code (2012)”. Mr Rabone consents to the inclusion of the information in the report in the form and context in which it appears.

# Corporate information

- ▶ Anchor Resources Limited
- ▶ ASX Share Code: AHR
- ▶ China Shandong Jinshunda Group (97.2%)
- ▶ Current funds available \$6M

# Anchor's – east coast projects



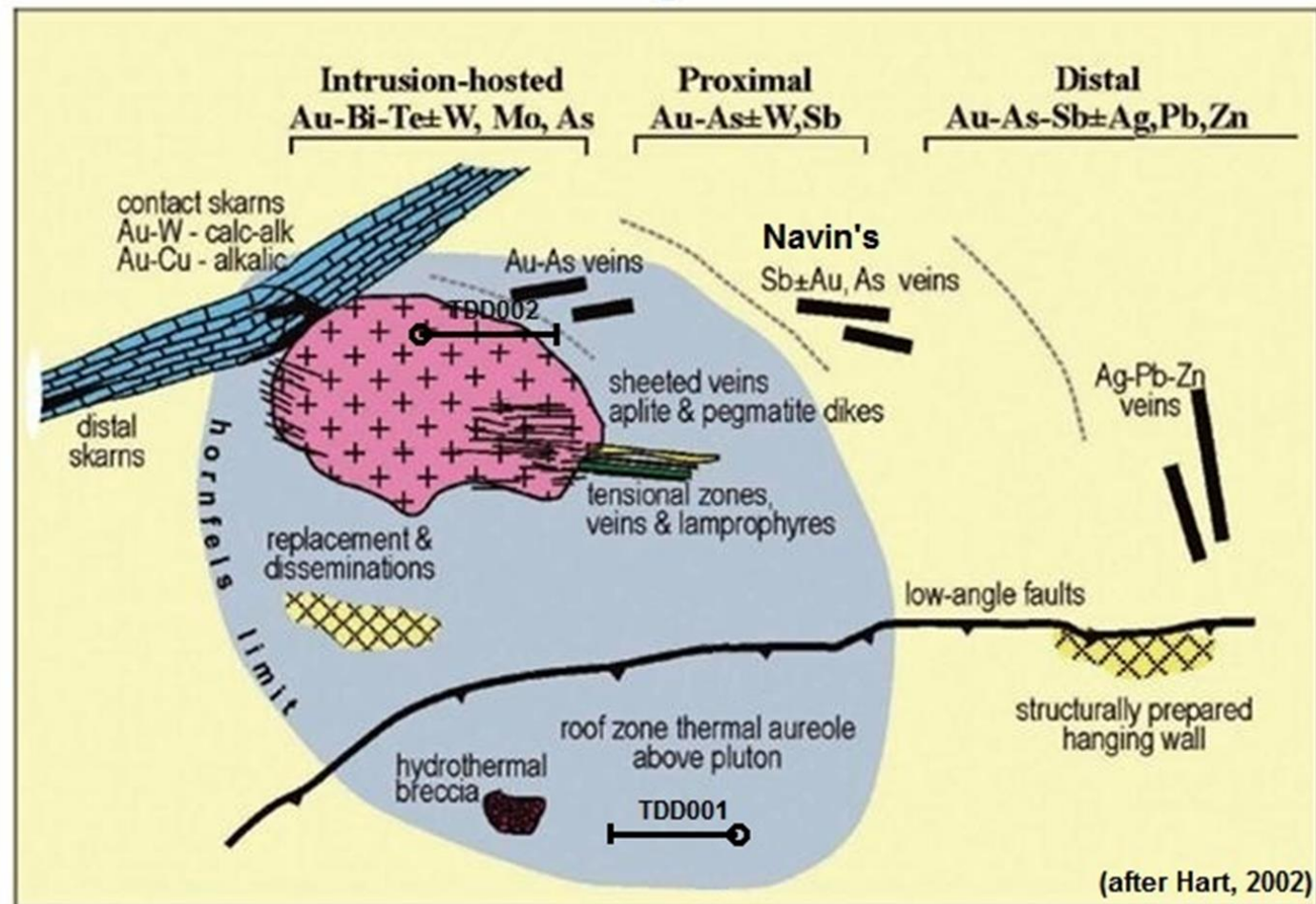
# Quality exploration models

- ▶ **Gold** – Intrusion-related gold systems (Blicks/Aspiring)
- ▶ **Copper** – Porphyry systems (Birdwood)
- ▶ **Antimony** – Orogenic deposit (Bielsdown)

# IRGS - a newly recognized mineralizing model

- ▶ First described in 1999
- ▶ Wide range of mineralizing styles
- ▶ Styles vary predictably outwards from a central mineralizing intrusion

# IRGS – concentric metal zoning



# IRGS exploration model characteristics

- ▶ Metals derived from granitic intrusions
- ▶ Strong gold – bismuth – tellurium association
- ▶ Age of mineralization and host rock similar
- ▶ Commonly found in tin/tungsten mineral districts
- ▶ No classic porphyry concentric alteration haloes



# World gold endowment in deposits greater than 10 million ounces

| TYPE                                 | NUMBER    | AVERAGE SIZE<br>(Million ounces) |
|--------------------------------------|-----------|----------------------------------|
| ▶ OROGENIC                           | 20        | 21                               |
| ▶ <b>IRGS (described since 1999)</b> | <b>13</b> | <b>34</b>                        |
| ▶ PORPHYRY                           | 27        | 27                               |
| ▶ WITWATERSRAND                      | 8         | 157                              |

# IRGS next major source of world gold?

- ▶ Practical, pragmatic & predictable model
- ▶ High discovery rate of large deposits
- ▶ Currently 18% world gold & growing

***Anchor is a first mover & leader in Australia***

# Alaska & Yukon – leading the World



# Tintina gold belt - Alaska & Yukon

| Alaska (USA)     |            |             |              |
|------------------|------------|-------------|--------------|
| Deposit          | Size       | Gold Grade  | Contained Au |
|                  | Mt         | g/t         | Moz Au       |
| Donlin           | 633.5      | 2.21        | 45           |
| Livengood        | 1,190      | 0.54        | 20.6         |
| <i>Fort Knox</i> | <i>308</i> | <i>0.93</i> | <i>9.2</i>   |
| Dolphin          | 254.5      | 0.68        | 5.6          |
| Pogo             | 12.33      | 12.5        | 4.97         |
| Cleary Hill      | 1.46       | 34          | 1.6          |
| True North       | 18         | 2.24        | 1.3          |
| Shotgun          | 32.8       | 0.93        | 0.98         |
| Vinasale         | 11.92      | 2.4         | 0.92         |
| Yukon (Canada)   |            |             |              |
| Dublin Gulch     | 300        | 0.66        | 6.3          |
| Coffee           | 64.42      | 1.56        | 3.24         |
| Golden Saddle    | 19.19      | 2.55        | 1.58         |
| Brewery Creek    | 42.9       | 1.01        | 1.39         |
| Red Mountain     | 2.42       | 7.4         | 0.58         |

# Why Anchor stands apart

Focus and expertise on IRGS:

- ▶ Our people – staff & consultants
- ▶ Strongly supportive shareholder & funding
- ▶ Intellectual property developed over past 3 years
- ▶ Boots on ground approach

## Why Anchor stands apart (cont...)

- ▶ Applying advanced pragmatic scientific methods
- ▶ Progressive peer review
- ▶ Innovative thinking
- ▶ Three quality IRGS targets drill ready
- ▶ Counter cyclic timing to enhance opportunities

# Good places to be exploring for IRGS

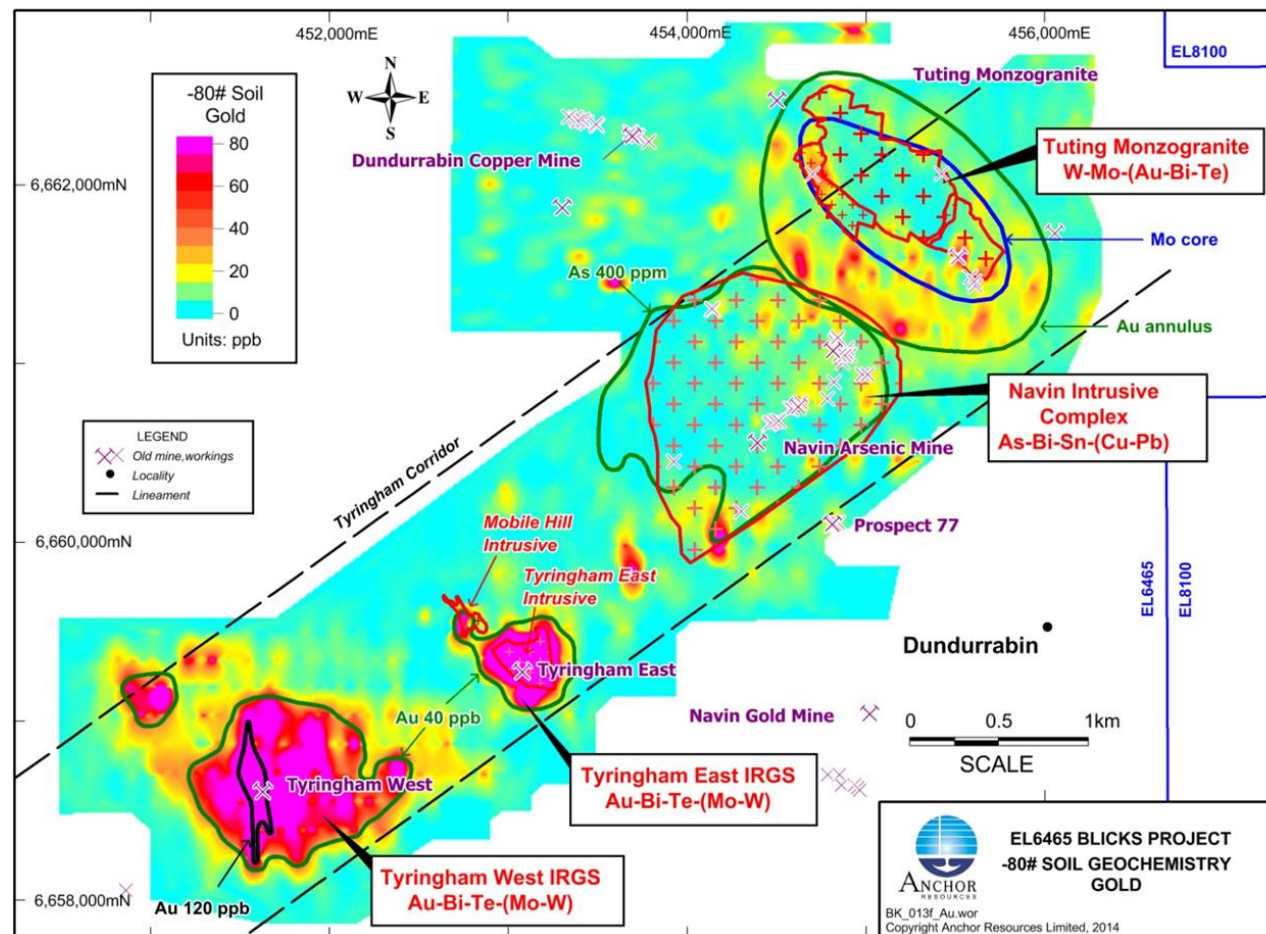
## **New England Fold Belt, NSW**

- ▶ A new frontier for large deposits
- ▶ Compare with Lachlan Fold Belt 25 years ago

## **Hodgkinson Basin, Qld**

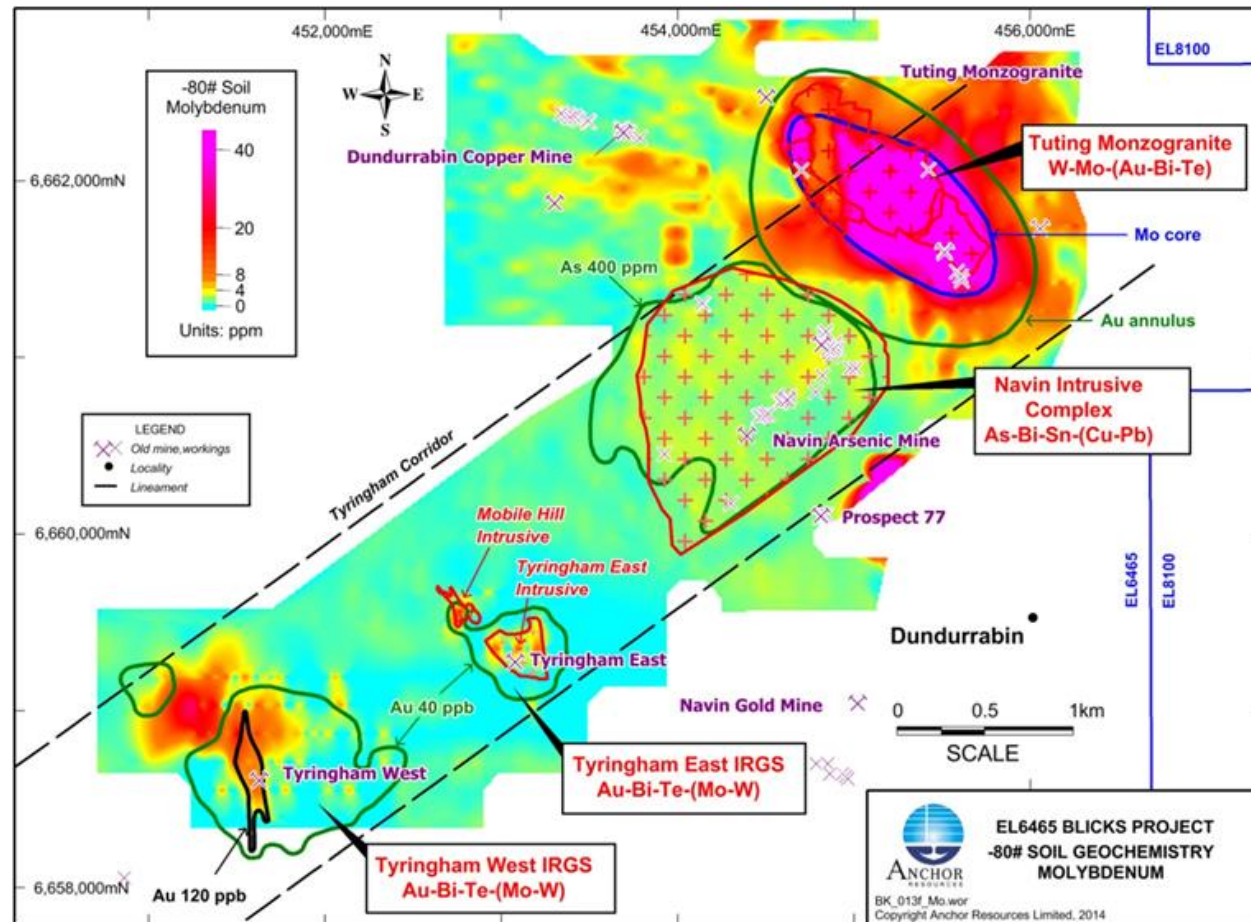
- ▶ A well endowed mineral province

# Tyringham - two gold systems

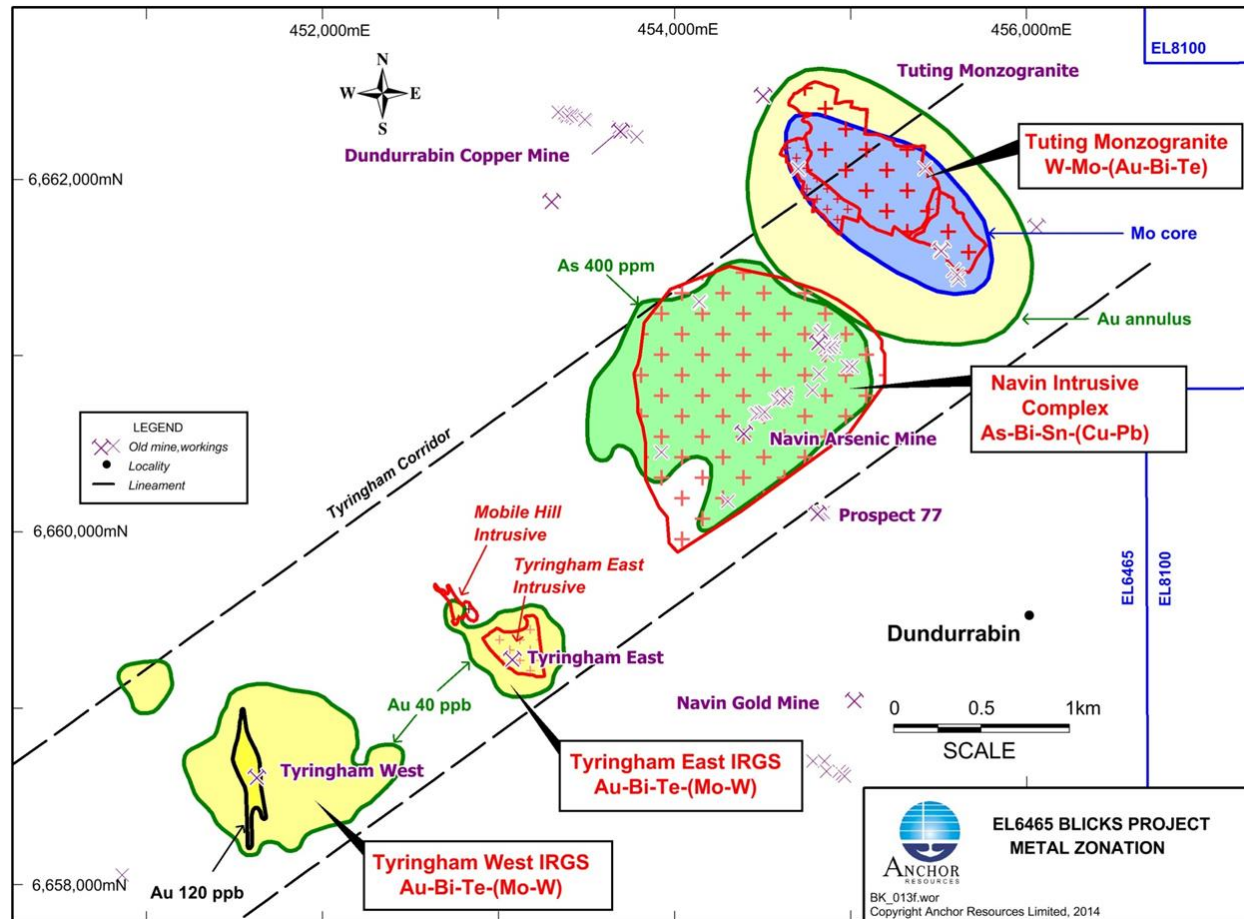




# Tuting - Porphyry Mo-W system & Au

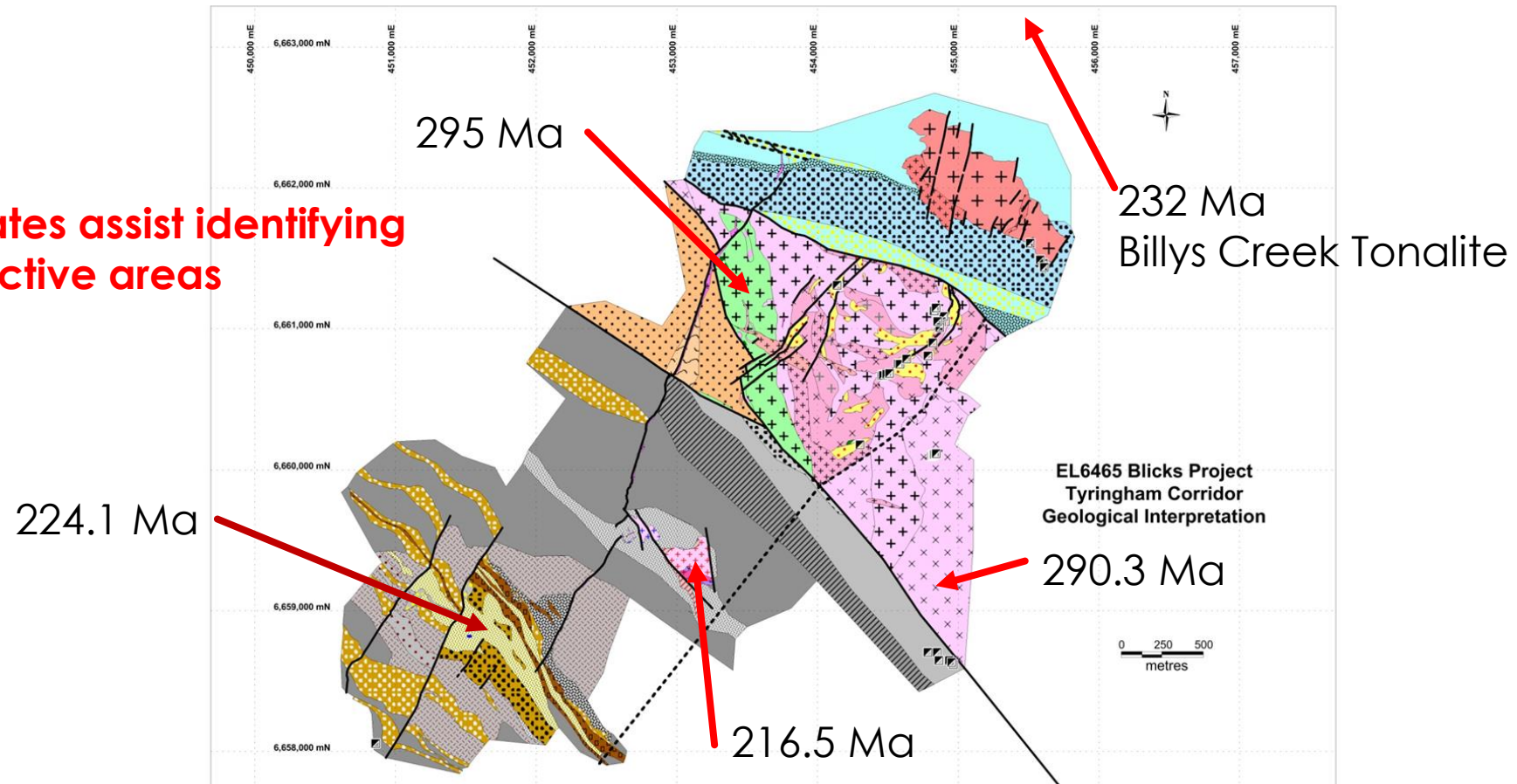


# Blicks - newly discovered IRGS & porphyry

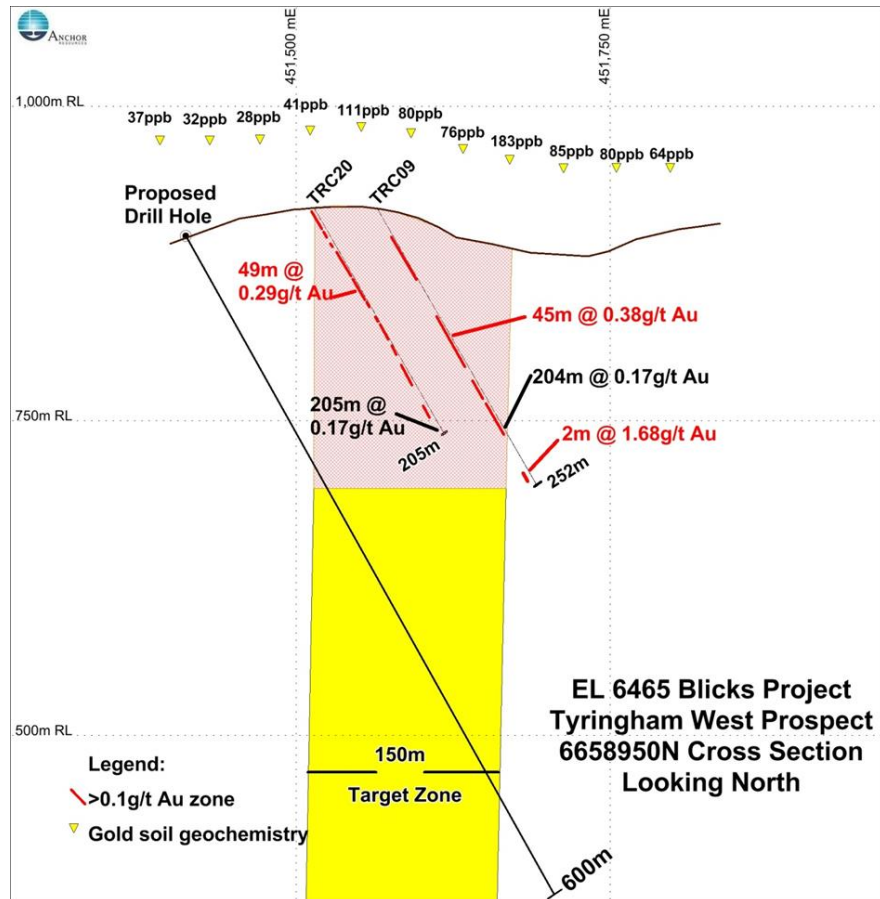


# Tyringham Corridor geology (Groves 2013)

**Age dates assist identifying prospective areas**



# Upcoming drilling – Tyringham West



# Upcoming drilling - Tuting

## **Initial RC program :**

- ▶ Test metals geochemistry in various Mo & Au zones
- ▶ Rapid first pass up to 150 m deep

## **Follow up:**

- ▶ Targeted diamond drilling program